



# Example

Fax this to SMK Co., Ltd at Fax: +81-42-703-0026

Date:

E-mail : smk\_overseas@e-smk.co.jp

## Your Specifications for Perfect-navi L Type Slide Unit

Thank you for your inquiry about **Perfect-navi Slide Unit**. We would like to confirm the specification so please answer below questions and send us back.

Contact person

1) Trading Company				2) Manufacturer			
Company name	Trading Company name			Company name	Manufacturer Company name		
Department	Department	Position	Position	Department	Department	Position	Position
Your name	First and last name	Fax	+XX-XXXXXXXXXX	Your name	First and last name	Fax	+XX-XXXXXXXXXX
E-mail	XXXX@XXX			E-mail	XXXX@XXX		

- 3) Power supply frequency —  50Hz  60Hz
- 4) Your spot welding machine — Maker ( **Maker name** )
- 5) Squeeze time — ( **20** cycle )
- 6) Nut feeding method —  Feeder  Manual feed
- 7) Nut feeder — Maker ( **Maker name** )
- 8) Water hose joint — L-shaped hose connector
- 9) Air piping —  from the feeder  from the primary side

- Set the start-up self-hold on the welding machine to activate when the current starts to flow.
- Upper tip needs clearance for guide pin.
- Please provide us 5 pcs each of nut samples.

Write your full name.

When step on the foot-operated switch for a moment,

1. Pressurization is released immediately.  
→Self-hold works with starting of energization.
2. Pressurization is not released.  
→Self-hold works since the squeeze time.

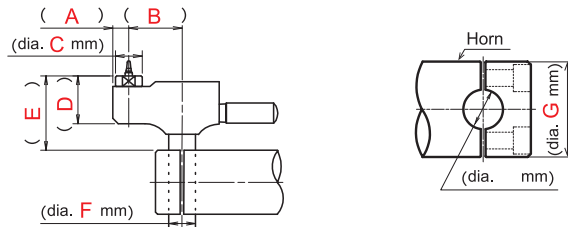
We will manufacture the slide unit to fit sample nut you supplied to us.

10) Specification 1	11) Specification 2	12) Specification 3
• Nut size (M <b>6</b> )	• Nut size (M <b>8</b> )	• Nut size (M )
• Nut shape	• Nut shape	• Nut shape
<input checked="" type="checkbox"/> Square <input type="checkbox"/> Hex <input type="checkbox"/> Round	<input checked="" type="checkbox"/> Square <input type="checkbox"/> Hex <input type="checkbox"/> Round	<input type="checkbox"/> Square <input type="checkbox"/> Hex <input type="checkbox"/> Round
<input type="checkbox"/> Flange type <input type="checkbox"/> T-nut	<input type="checkbox"/> Flange type <input type="checkbox"/> T-nut	<input type="checkbox"/> Flange type <input type="checkbox"/> T-nut
<input type="checkbox"/> Hex cap nut <input type="checkbox"/> Other ( )	<input type="checkbox"/> Hex cap nut <input type="checkbox"/> Other ( )	<input type="checkbox"/> Hex cap nut <input type="checkbox"/> Other ( )
• Hole diameter of work $\phi$ and board thickness t	• Hole diameter of work $\phi$ and board thickness t	• Hole diameter of work $\phi$ and board thickness t
Board thickness t Hole $\phi$ • ( $\phi$ <b>7</b> )(t <b>1.6</b> )	Board thickness t Hole $\phi$ • ( $\phi$ <b>9</b> )(t <b>1.2</b> )	Board thickness t Hole $\phi$ • ( $\phi$ )(t )

### Nut shape



### 13) Dimensions of L type Holder and Horn



### 14) The shape of metal connector and number of pins of the foot-operated switch or the connector between nut feeder and welding machine in use.

# Please answer below questions only when using a controller for manual operation.

Spot welding machine

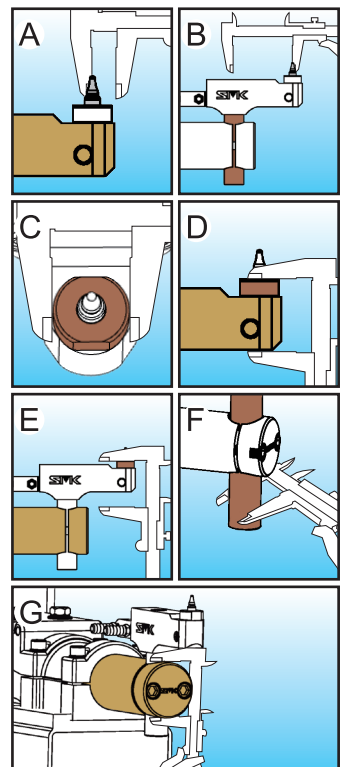
Foot-operated switch

OD (dia. mm)  2P (female)  3P (female)  Rectangular Connector #

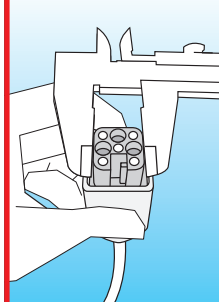
Number of pins ( P ) Width ( )

Cable connection  Connecting specification, Outside Japan /Screwless terminal block

# If you select a rectangular connector, please send us a photo and electrical drawing to confirm start signal.



Check the bottom of the welding machine. If you use a nut feeder, check the connector between nut feeder and welding machine.



Please take a picture so that we can see the size of a connector and the number of pins.