

Your Specifications for Handy-Robo-navi-Bolt Slide Unit

Contact person

Thank you for your inquiry about **Handy-Robo-navi-Bolt Slide Unit**. We would like to confirm the specification so please answer below questions and send us back.

1) Trading Company			
Company name			
Department			Position
Your name			Fax
E-mail			

2) Manufacturer			
Company name			
Department			Position
Your name			Fax
E-mail			

- 3) Power supply frequency – 50Hz 60Hz
- 4) Your spot welding machine — Maker ()
- 5) Squeeze time (cycle)
- 6) Bolt feeding method — Feeder Manual feed
- 7) Bolt feeder — Maker ()
- 8) Water hose joint — L-shaped hose connector
- 9) Air piping — from the feeder from the primary side

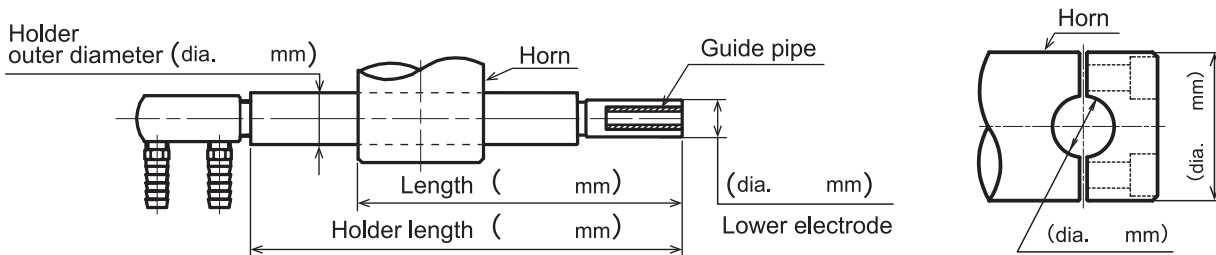
<ul style="list-style-type: none"> Set the start-up self-hold on the welding machine to activate when the current starts to flow. Please provide us 5 pcs. each of bolt samples.

10) Specification 1	
• Bolt size (M)	
• Below the head (mm)	
• Hole diameter of work ϕ and board thickness t	
Board thickness t	Hole ϕ
	• (ϕ) (t)
	• (ϕ) (t)
	• (ϕ) (t)

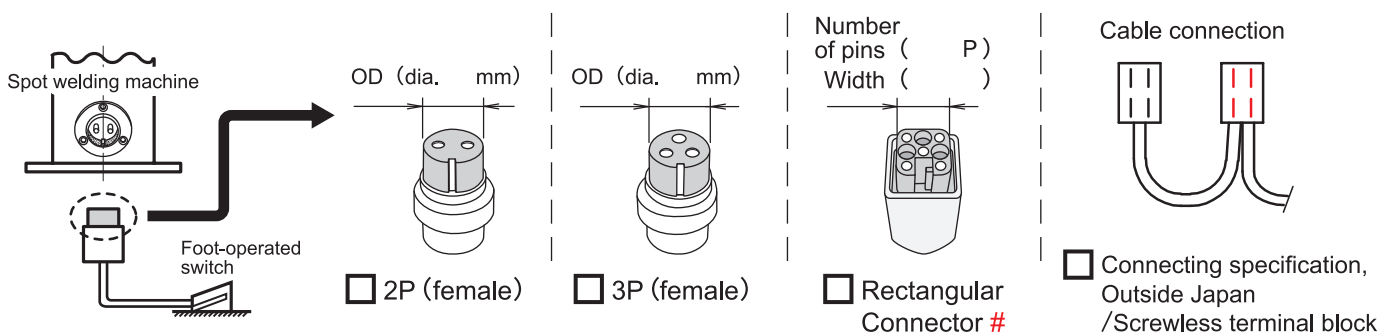
11) Specification 2	
• Bolt size (M)	
• Below the head (mm)	
• Hole diameter of work ϕ and board thickness t	
Board thickness t	Hole ϕ
	• (ϕ) (t)
	• (ϕ) (t)
	• (ϕ) (t)

12) Specification 3	
• Bolt size (M)	
• Below the head (mm)	
• Hole diameter of work ϕ and board thickness t	
Board thickness t	Hole ϕ
	• (ϕ) (t)
	• (ϕ) (t)
	• (ϕ) (t)

13) Dimensions of Holder and Horn



14) The shape of metal connector and number of pins of the foot-operated switch or the connector between nut feeder and welding machine in use.



If you select a rectangular connector, please send us a photo and electrical drawing to confirm start signal.

Example

Fax this to SMK Co., Ltd at Fax: +81-42-703-0026

Date: / /

E-mail : smk_overseas@e-smk.co.jp

Your Specifications for Handy-Robo-navi-Bolt Slide Unit

Thank you for your inquiry about **Handy-Robo-navi-Bolt Slide Unit**. We would like to confirm the specification so please answer below questions and send us back.

Contact person

1) Trading Company				2) Manufacturer			
Company name	Trading Company name			Company name	Manufacturer Company name		
Department	Department	Position	Position	Department	Department	Position	Position
Your name	First and last name	Fax	+XX-XXXXXXXXXX	Your name	First and last name	Fax	+XX-XXXXXXXXXX
E-mail	XXXXX@XXX			E-mail	XXXXX@XXX		

- 3) Power supply frequency — 50Hz 60Hz
 4) Your spot welding machine — Maker (**Maker name**)
 5) Squeeze time — (**20** cycle)
 6) Bolt feeding method — Feeder Manual feed
 7) Bolt feeder — Maker (**Maker name**)
 8) Water hose joint — L-shaped hose connector
 9) Air piping — from the feeder from the primary side

⚠

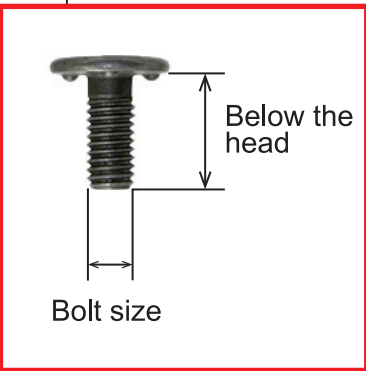
- Set the start-up self-hold on the welding machine to activate when the current starts to flow.
- Please provide us 5 pcs. each of bolt samples.

10) Specification 1	11) Specification 2	12) Specification 3																											
<ul style="list-style-type: none"> Bolt size (M 6) Below the head (15 mm) Hole diameter of work ϕ and board thickness t 	<ul style="list-style-type: none"> Bolt size (M 8) Below the head (20 mm) Hole diameter of work ϕ and board thickness t 	<ul style="list-style-type: none"> Bolt size (M) Below the head () mm) Hole diameter of work ϕ and board thickness t 																											
<table border="0"> <tr> <td>Board thickness t</td> <td>Hole ϕ</td> <td>• (ϕ 6.2) (t 1.6)</td> </tr> <tr> <td></td> <td></td> <td>• (ϕ) (t)</td> </tr> <tr> <td></td> <td></td> <td>• (ϕ) (t)</td> </tr> </table>	Board thickness t	Hole ϕ	• (ϕ 6.2) (t 1.6)			• (ϕ) (t)			• (ϕ) (t)	<table border="0"> <tr> <td>Board thickness t</td> <td>Hole ϕ</td> <td>• (ϕ 8.2) (t 1.2)</td> </tr> <tr> <td></td> <td></td> <td>• (ϕ) (t)</td> </tr> <tr> <td></td> <td></td> <td>• (ϕ) (t)</td> </tr> </table>	Board thickness t	Hole ϕ	• (ϕ 8.2) (t 1.2)			• (ϕ) (t)			• (ϕ) (t)	<table border="0"> <tr> <td>Board thickness t</td> <td>Hole ϕ</td> <td>• (ϕ) (t)</td> </tr> <tr> <td></td> <td></td> <td>• (ϕ) (t)</td> </tr> <tr> <td></td> <td></td> <td>• (ϕ) (t)</td> </tr> </table>	Board thickness t	Hole ϕ	• (ϕ) (t)			• (ϕ) (t)			• (ϕ) (t)
Board thickness t	Hole ϕ	• (ϕ 6.2) (t 1.6)																											
		• (ϕ) (t)																											
		• (ϕ) (t)																											
Board thickness t	Hole ϕ	• (ϕ 8.2) (t 1.2)																											
		• (ϕ) (t)																											
		• (ϕ) (t)																											
Board thickness t	Hole ϕ	• (ϕ) (t)																											
		• (ϕ) (t)																											
		• (ϕ) (t)																											

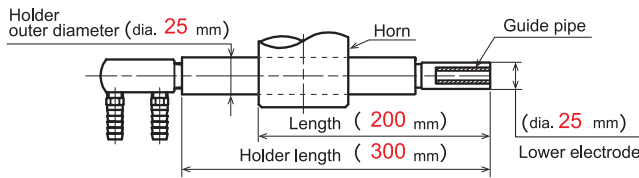
Write your full name.

When step on the foot-operated switch for a moment,
 1. Pressurization is released immediately.
 →Self-hold works with starting of energization.
 2. Pressurization is not released.
 →Self-hold works since the squeeze time.

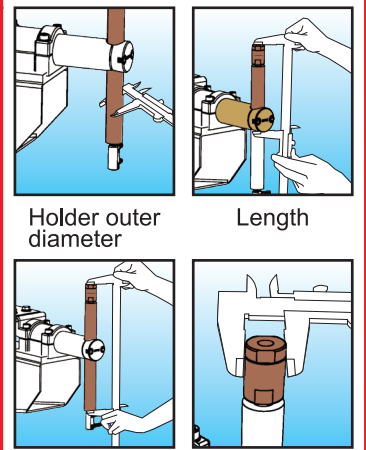
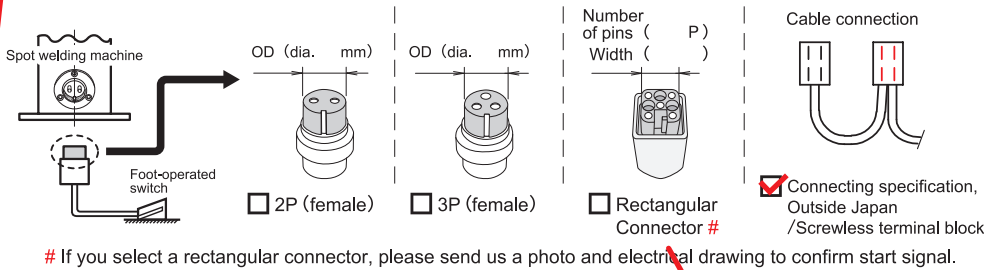
We will manufacture the slide unit to fit sample bolt you supplied to us.



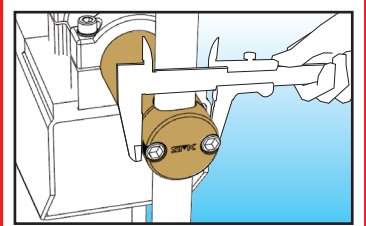
13) Dimensions of Holder and Horn



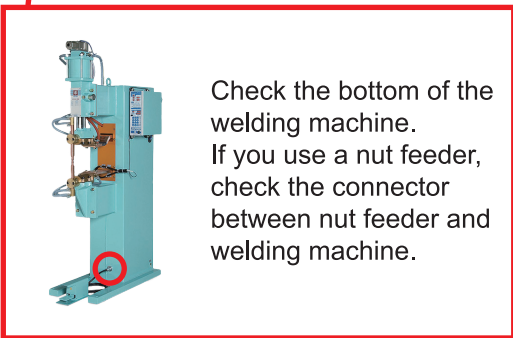
14) The shape of metal connector and number of pins of the foot-operated switch or the connector between nut feeder and welding machine in use.



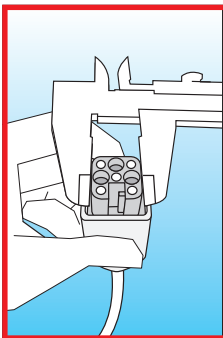
Holder outer diameter Length
Holder length Lower electrode



Horn outer diameter



Check the bottom of the welding machine. If you use a nut feeder, check the connector between nut feeder and welding machine.



Please take a picture so that we can see the size of a connector and the number of pins.